



TIIG

INJURY SURVEILLANCE IN THE NORTH WEST OF ENGLAND

Injury attendances to Tameside General Hospital Emergency Department

October 2012 to September 2013

This report summarises recorded injury attendances to Tameside Emergency Department (ED) between October 2012 and September 2013.

Between October 2012 and September 2013 there were 77,693 injury attendances to Tameside ED. Females accounted for just over half (51%) of all attendances. The month with the highest attendances for injury was July (n=6,849) with February having the lowest (n=6,044) (**Figure 1**). The majority (89%) of attendances were recorded as other injury; falls accounted for the highest proportion (6%) of specified injury groups followed by road traffic collisions (RTCs) (2%) (**Table 1**).

For all injuries the highest proportion of attendances were for persons aged 20 to 34 and 65 plus years (both 22%) (**Figure 2**). Over a third (36%) of fall injury attendances were by persons aged 65 or over. Close to a third (32%) of RTC attendances were for persons aged 20 to 34. Over four in ten (44%) of all sports injury attendances were for persons aged 5 to 19 with almost a quarter (23%) aged between 20 and 34 (**Figure 3**).

Table 2 shows the ethnicity of injury attendees to Tameside ED. Close to nine in ten (86%) were white and 2% were Pakistani.

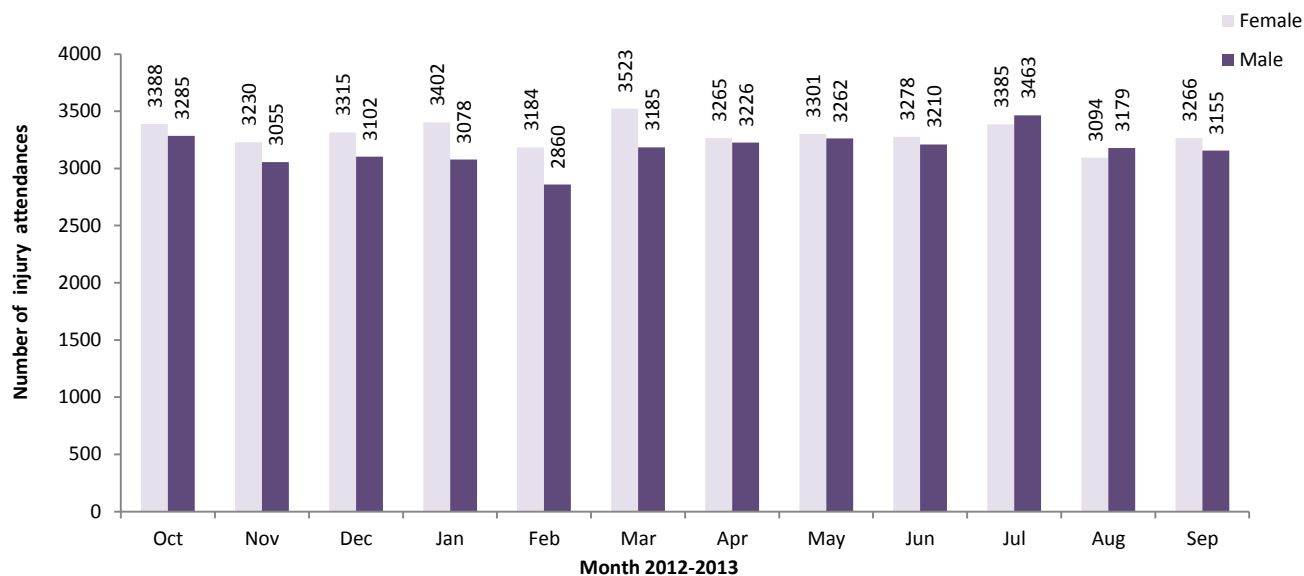
The disposal of a patient can give an indication of the severity of the injuries sustained. Most

attendees were referred for further treatment (57%), over a quarter (26%) were admitted and 12% were discharged (**Table 3**). Over two-fifths (44%) of deliberate self-harm (DSH) attendees and almost three in ten (29%) of alcohol-related attendances were admitted. Close to three quarters (73%) of sports injury attendances were referred. Over a quarter (26%) of RTC attendances were discharged (**Table 4**).

Table 5 shows the arrival method of injury attendances at Tameside ED. Nearly a third (32%) of attendees arrived by ambulance.

Table 6 shows assault attendances to Tameside ED. Over seven in ten (71%) of assault attendees were male, and over two-fifths (43%) were aged 20 to 34. Over two-fifths (43%) of assault attendees arrived at the ED by ambulance.

Figure 1: Tameside ED: Total injury attendances by gender and month, October 2012 to September 2013*

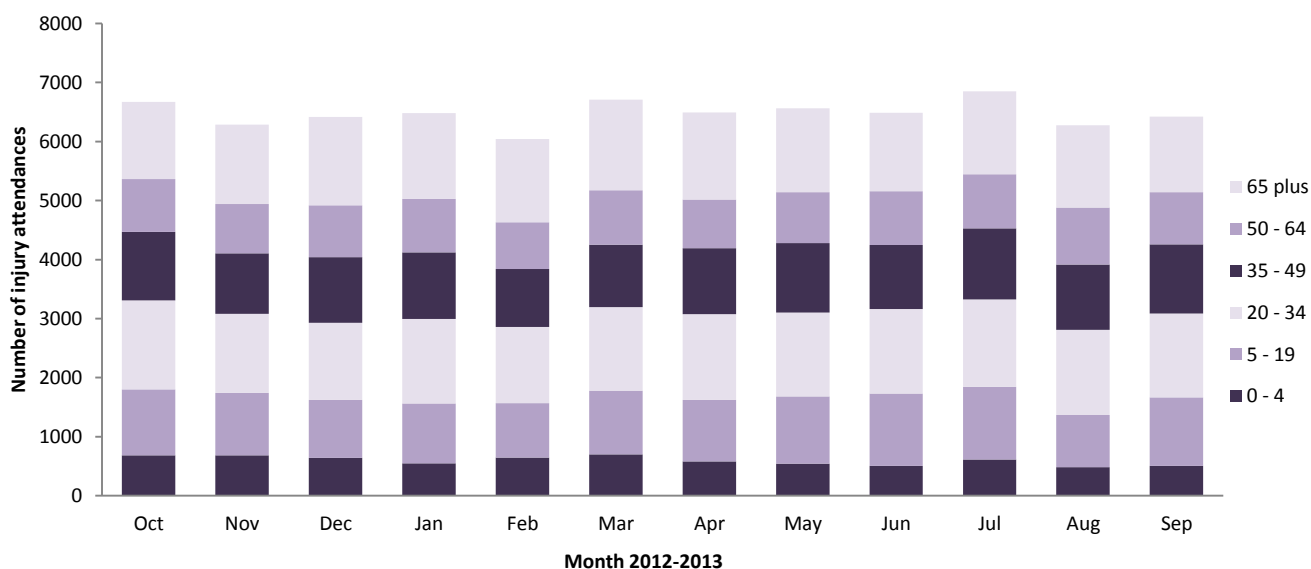


*There were three attendances where gender was recorded as unknown

Table 1: Tameside ED: Total injury attendances by injury group and month, October 2012 to September 2013¹

Injury group	Oct	Nov	Dec	Jan	Feb	Mar	Apr	May	Jun	Jul	Aug	Sep	Total	%
Other	5758	5543	5648	5694	5431	6013	5830	5770	5785	6088	5532	5692	68784	89
Fall	402	371	392	494	324	345	312	401	337	414	399	318	4509	6
RTC	162	92	138	77	91	117	101	116	127	84	86	140	1331	2
Sports injury	147	87	48	52	69	86	105	94	62	80	78	114	1022	1
Assault	86	75	101	65	52	69	61	88	84	79	95	72	927	1
DSH	78	73	53	62	61	51	46	47	60	72	59	50	712	1
Alcohol related	29	31	26	29	10	17	17	39	28	26	<25	<35	304	0
Not recorded	11	13	11	7	6	10	19	8	5	6	<6	***	104	0
Total	6673	6285	6417	6480	6044	6708	6491	6563	6488	6849	6274	6421	77693	100

Figure 2: Tameside ED: Total injury attendances by age group and month, October 2012 to September 2013



¹ Please note that all numbers less than five have been suppressed in line with patient confidentiality and if there is only one number <5 in category then two numbers will be suppressed at the next level.

Figure 3: Tameside ED: Total injury attendances by age group and injury group (excluding other injury and not recorded), October 2012 to September 2013

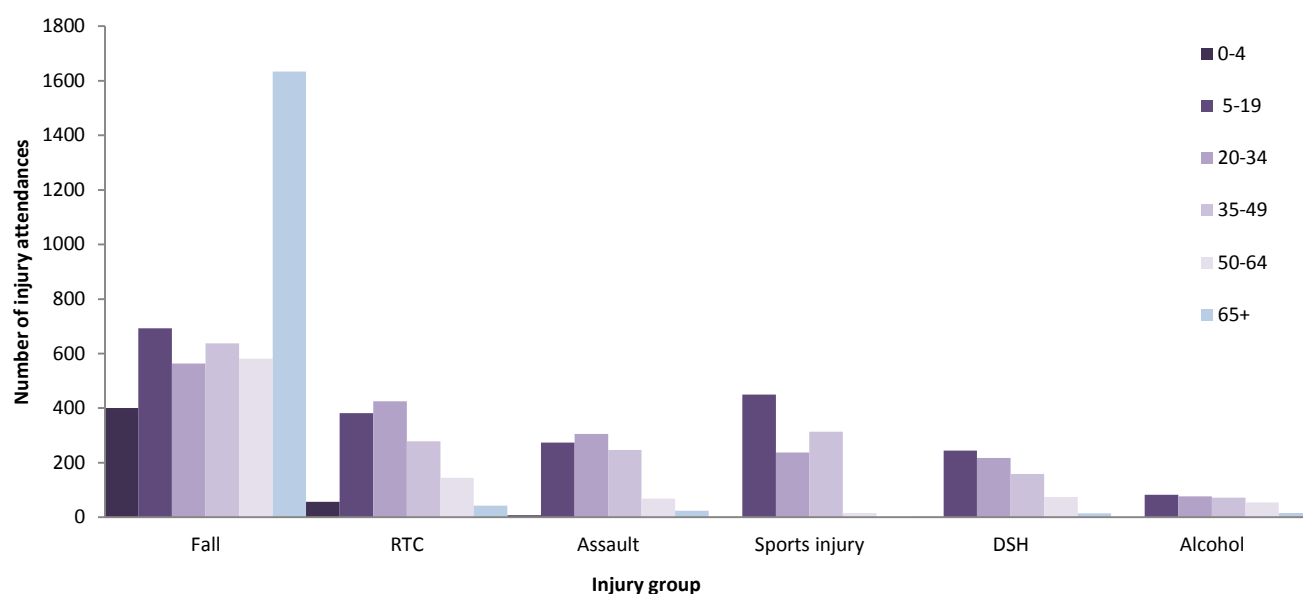


Table 2: Tameside ED: Total injury attendances by ethnicity and month, October 2012 to September 2013²

Ethnicity	Oct	Nov	Dec	Jan	Feb	Mar	Apr	May	Jun	Jul	Aug	Sep	Total	%
White	5714	5401	5470	5581	5170	5821	5566	5584	5503	5895	5311	5427	66443	86
Not collected	427	385	411	390	362	393	431	435	453	462	493	506	5148	7
Pakistani	129	112	124	112	107	107	106	145	125	121	125	122	1435	2
Any other group	96	99	101	129	117	117	81	119	130	96	83	99	1267	2
Bangladesh	96	93	101	88	92	80	91	86	94	88	85	84	1078	1
Indian	59	44	56	54	54	56	68	54	63	56	55	52	671	1
Mixed	43	54	60	43	45	53	49	47	44	56	44	49	587	1
Not stated	62	46	47	42	37	31	50	32	25	36	32	23	463	1
Black	26	29	37	27	32	29	34	40	34	25	28	49	390	1
Asian other	<20	10	<10	<15	12	8	10	15	10	<15	8	5	126	0
Chinese	***	12	***	***	16	13	5	6	7	***	10	5	85	0
Total	6673	6285	6417	6480	6044	6708	6491	6563	6488	6849	6274	6421	77693	100

Table 3: Tameside ED: Total injury attendances by method of disposal and month, October 2012 to September 2013³

Disposal	Oct	Nov	Dec	Jan	Feb	Mar	Apr	May	Jun	Jul	Aug	Sep	Total	%
Referral/follow-up	3809	3650	3507	3622	3449	3666	3719	3786	3775	4117	3634	3689	44423	57
Admitted	1733	1625	1793	1776	1641	1853	1698	1695	1616	1671	1590	1637	20328	26
Discharged	786	729	779	752	603	768	750	809	859	743	812	860	9250	12
Other	345	281	338	330	351	421	324	273	238	318	238	235	3692	5
Total	6673	6285	6417	6480	6044	6708	6491	6563	6488	6849	6274	6421	77693	100

² Please note that all numbers less than five have been suppressed in line with patient confidentiality and if there is only one number <5 in category then two numbers will be suppressed at the next level.

³ Admitted=admitted to ED bed/became a lodged patient of the same health care provider; Discharged=discharged - did not require any follow up treatment; Referred=discharged - follow up treatment to be provided by GP, referred to ED clinic, referred to fracture clinic, referred to other out-patient clinic, transferred to other health care provider, referred to other health care professional; Other=died in department, left department before being treated, left department having refused treatment, other.

Table 4: Tameside ED: Total injury attendances by method of disposal and injury group (excluding other injury and not recorded), October 2012 to September 2013

Disposal	Alcohol related		Assault		Fall		RTC		DSH		Sports injury		Total	
	n	%	n	%	n	%	n	%	n	%	n	%	n	%
Discharged	35	12	137	15	784	17	342	26	10	1	229	22	1537	17
Referral/follow-up	119	39	548	59	2763	61	888	67	255	36	749	73	5322	60
Admitted	87	29	63	7	778	17	44	3	311	44	17	2	1300	15
Other	63	21	179	19	184	4	57	4	136	19	27	3	646	7
Total	304	100	927	100	4509	100	1331	100	712	100	1022	100	8805	100

Table 5: Tameside ED: Total injury attendances by mode of arrival and month, October 2012 to September 2013

Arrival mode	Oct	Nov	Dec	Jan	Feb	Mar	Apr	May	Jun	Jul	Aug	Sep	Total	%
Other	4605	4246	4135	4273	3974	4458	4356	4466	4523	4731	4320	4384	52471	68
Ambulance	2068	2039	2282	2207	2070	2250	2135	2097	1965	2118	1954	2037	25222	32
Total	6673	6285	6417	6480	6044	6708	6491	6563	6488	6849	6274	6421	77693	100

Table 6: Tameside General Hospital ED: Assault attendances by gender, mode of arrival and age group, October 2012 to September 2013

Injury type	Assault attendees (n=927)		All injuries % (n=77,693)
	n	%	%
Gender			
Female	266	29	51
Male	661	71	49
Arrival Mode			
Ambulance	395	43	32
Other	532	57	68
Age group			
0 - 4	7	1	9
5 - 19	208	22	17
20 - 34	399	43	22
35 - 49	220	24	17
50 - 64	69	7	14
65 plus	24	3	22

Published November 2013

Jennifer Brizell (TIIG researcher)

Centre for Public Health, Faculty of Education, Health and Community, Liverpool John Moores University
2nd Floor, Henry Cotton Campus, 15-21 Webster Street, Liverpool, L3 2ET

Tel: 0151 231 4500 Email: j.s.brizell@ljmu.ac.uk

Website: www.tiig.info (please note all data requests should be made through the TIIG website)

Twitter: [@TIIG_CPH](https://twitter.com/TIIG_CPH)